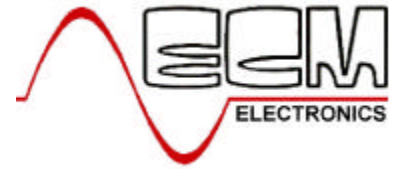
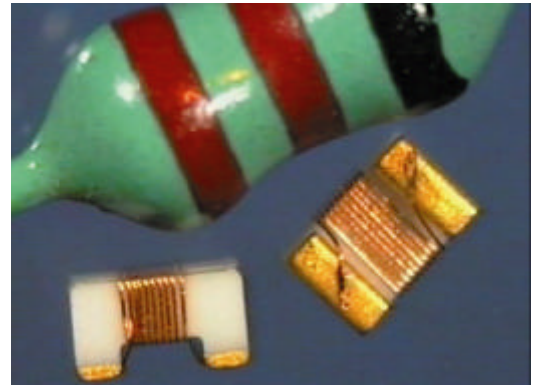


ECM 0805 Ceramic RF Chip Inductor



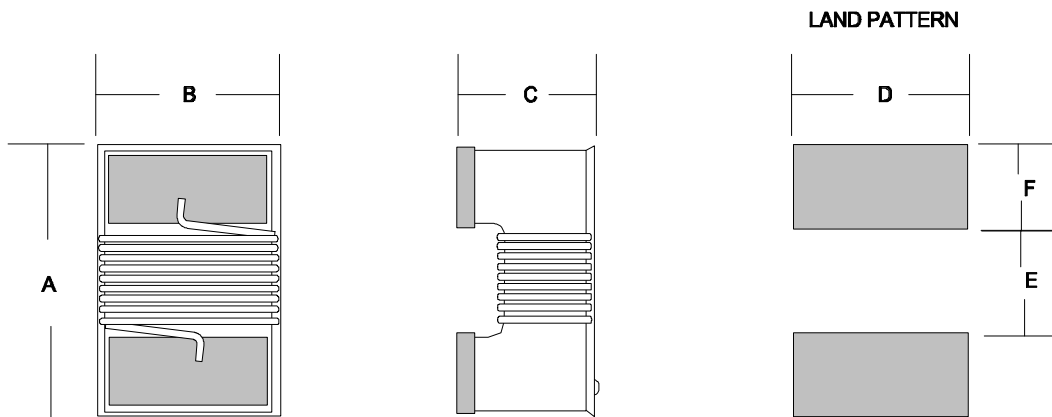
EC0805 Series

- Standard EIA 0805 package
- Wire-wound Construction
- Ceramic Core
- High 'Q'
- High SRF
- Typical Reel Size 3000pcs



The EC0805 range of chip coils utilizes state of the art winding technology superior to many of our competitors. This ensures continued high quality production with zero machine down times, enabling ECM to offer stable delivery times and excellent component value repeatedly to our customers. High self resonance frequencies and Q are ensured by careful design, making this component, one of the most desired for wireless LAN, and remote RF sensor applications.

COMPONENT OUTLINE



DIMENSIONS (mm)

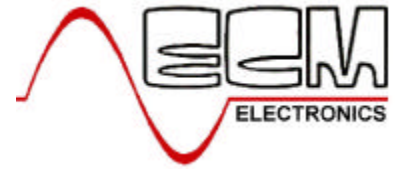
A	B	C	D	E	F
2.30	1.70	1.20	1.70	1.05	0.70

Specify terminal type :- 01 = W/Ni/Au - STANDARD 02 = Pd/Pt/Ag – SUPER SOLDERABILITY

ECM Electronics Limited, Penmaen House, Ashington, West Sussex, RH20 3JR, UK
Tel: +44(0)1903 892810: Fax: +44(0)1903 892738. Email: ecm@ecmelectronics.co.uk

Although we have attempted to accurately reflect the products we market. ECM reserve the right without prior notice to discontinue any product or make design changes we believe necessary.

ECM 0805 Ceramic RF Chip Inductor



ECM Part	L (nH)	Tol %	Q Min. (**MHz)	SRF Min. (MHz)	R_{DC} MAX (W)	I_{DC} I_N (mA)
EC0805A-3N3	3.3 @250MHz	J,K	50	>3000	0.07	600
EC0805A-3N9	3.9 @250MHz	J,K	50	>3000	0.08	600
EC0805A-4N7	4.7 @250MHz	J,K	50	>3000	0.09	600
EC0805A-5N6	5.6 @250MHz	J,K	50	>3000	0.11	600
EC0805A-6N8	6.8 @250MHz	J,K	50	>3000	0.12	600
EC0805A-8N2	8.2 @250MHz	J,K	45	>3000	0.15	600
EC0805A-010	10 @250MHz	J,K	45	2700	0.19	600
EC0805A-012	12 @250MHz	G,J,K	45	2700	0.20	600
EC0805A-015	15 @250MHz	G,J,K	45	2500	0.21	600
EC0805A-018	18 @250MHz	G,J,K	45	2300	0.21	600
EC0805A-022	22 @250MHz	G,J,K	45	2200	0.22	500
EC0805A-027	27 @250MHz	G,J,K	45	2000	0.24	500
EC0805A-033	33 @250MHz	G,J,K	40	1900	0.27	500
EC0805A-039	39 @250MHz	G,J,K	40	1700	0.29	500
EC0805A-047	47 @200MHz	G,J,K	40	1500	0.31	500
EC0805A-056	56 @200MHz	G,J,K	40	1300	0.34	500
EC0805A-068	68 @200MHz	G,J,K	40	1200	0.38	400
EC0805A-082	82 @150MHz	G,J,K	40	1100	0.43	400
EC0805A-R10	100 @150MHz	G,J,K	40	1050	0.46	400
EC0805A-R12	120 @150MHz	G,J,K	35	950	0.47	400
EC0805A-R15	150 @100MHz	G,J,K	35	800	0.50	400
EC0805A-R18	180 @100MHz	G,J,K	35	750	0.65	400
EC0805A-R22	220 @100MHz	G,J,K	30	630	0.70	400
EC0805A-R27	270 @50MHz	G,J,K	30	550	0.78	400
EC0805A-R33	330 @50MHz	G,J,K	30	500	0.86	400
EC0805A-R39	390 @50MHz	G,J,K	30	450	0.95	400
EC0805A-R47	470 @50MHz	G,J,K	30	425	1.06	400
EC0805A-R56	560 @50MHz	G,J,K	30	400	1.14	400
EC0805A-R68	680 @50MHz	G,J,K	30	350	1.33	400
EC0805A-R75	750 @50MHz	G,J,K	30	350	1.42	400
EC0805A-R82	820 @50MHz	G,J,K	30	325	1.58	400

TOLERANCES G=2%; J=5%; K=10%.

**** = Test Frequency as specified in 'L' column**

ECM Electronics Limited, Penmaen House, Ashington, West Sussex, RH20 3JR, UK
 Tel: +44(0)1903 892810: Fax: +44(0)1903 892738. Email: ecm@ecmelectronics.co.uk

Although we have attempted to accurately reflect the products we market. ECM reserve the right without prior notice to discontinue any product or make design changes we believe necessary.