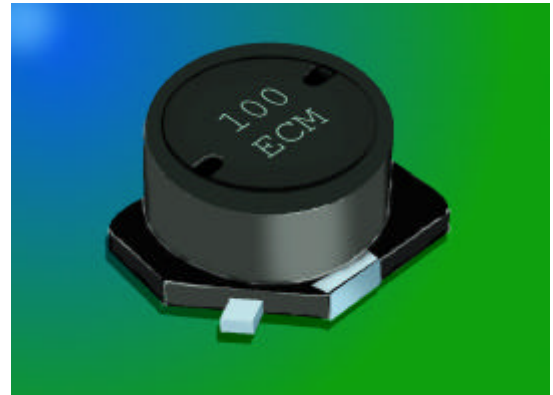


EC63/73/75 Series

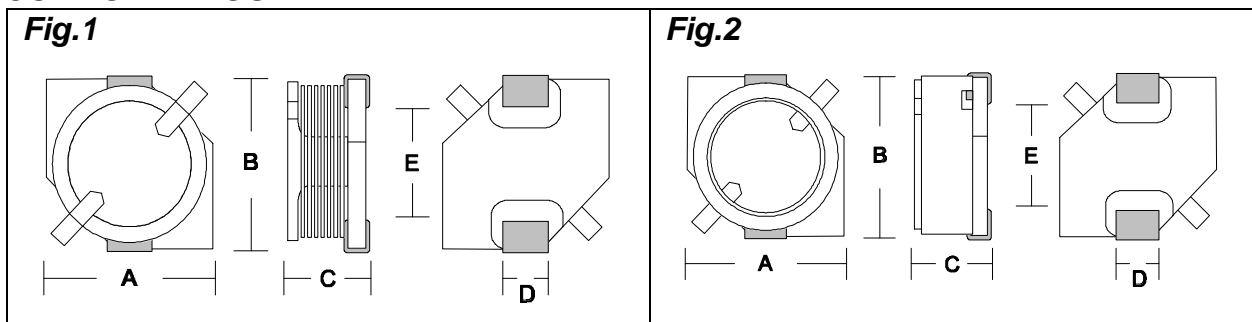
- Small PCB Area
- Low 3.0mm Height Option
- Up to 3 Amp
- Low Cost
- Typical Reel Size 1000pcs



The EC63/73/75 surface mount inductors comes in three package sizes with a high profile as low as 3.0mm. The **EC75C** (shown above) is ferrite shielded, as is both the **EC73C** and **EC63C**. The **EC73F** and **EC75F** are open construction. The whole range offers excellent *I_{sat}* characteristics for their given size along with excellent temperature endurance.

Suitable applications include power supplies for VTR, OA equipment, LCD display, and DC/DC converters.

COMPONENT OUTLINE

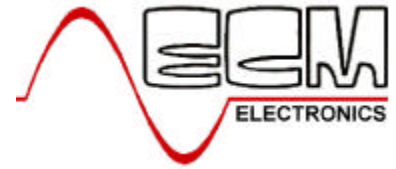


(1 = EC73F/75F Type, 2 = EC63C/73C/75C Type)

DIMENSIONS (mm)

ECM Type	Inductance Range	Outline (Fig.)	A (mm)	B	C	D	E
EC73F	1.0uH~100uH	1	7.4	7.4	3.5	2.1	5.4
EC75F	1.0uH~470uH	1	7.4	7.4	5.5	2.1	5.4
EC63C	10.0uH~330uH	2	6.2	6.2	3.0	1.9	3.0
EC73C	1.0uH~100uH	2	7.4	7.4	3.5	2.1	5.4
EC75C	1.0uH~560uH	2	7.4	7.4	5.5	2.1	5.4

ECM Surface Mount Power Inductors



ECM Part	L (mH)	Tol %	R_{DC} MAX (W)	I_{DC} I_N (A)
-----------------	---------------	--------------	-------------------------------	---

EC73F Series

EC73F-1R0	1.0 @1.0 kHz	M	0.022	2.88
EC73F-1R5	1.5 @1.0 kHz	M	0.026	2.67
EC73F-3R3	3.3 @1.0 kHz	M	0.041	2.08
EC73F-4R7	4.7 @1.0 kHz	M	0.049	1.92
EC73F-6R8	6.8 @1.0 kHz	M	0.067	1.60
EC73F-100	10 @1.0 kHz	M	0.085	1.41
EC73F-120	12 @1.0 kHz	M	0.10	1.28
EC73F-150	15 @1.0 kHz	M	0.13	1.12
EC73F-180	18 @1.0 kHz	M	0.16	1.00
EC73F-220	22 @1.0 kHz	M	0.18	0.93
EC73F-270	27 @1.0 kHz	M	0.24	0.80
EC73F-330	33 @1.0 kHz	M	0.29	0.72
EC73F-390	39 @1.0 kHz	M	0.34	0.66
EC73F-470	47 @1.0 kHz	M	0.41	0.59
EC73F-560	56 @1.0 kHz	M	0.48	0.55
EC73F-680	68 @1.0 kHz	M	0.60	0.49
EC73F-820	82 @1.0 kHz	M	0.71	0.44
EC73F-101	100 @1.0 kHz	M	0.95	0.38

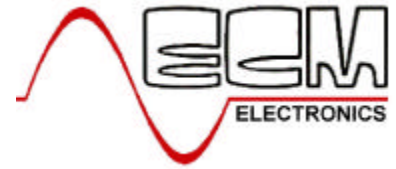
EC75F Series

EC75F-1R0	1.0 @1.0 kHz	M	0.023	2.88
EC75F-1R5	1.5 @1.0 kHz	M	0.028	2.56
EC75F-3R3	3.3 @1.0 kHz	M	0.038	2.16
EC75F-4R7	4.7 @1.0 kHz	M	0.049	1.88
EC75F-6R8	6.8 @1.0 kHz	M	0.060	1.68
EC75F-100	10 @1.0 kHz	M	0.070	1.56
EC75F-120	12 @1.0 kHz	M	0.080	1.44
EC75F-150	15 @1.0 kHz	M	0.090	1.36
EC75F-180	18 @1.0 kHz	M	0.10	1.28
EC75F-220	22 @1.0 kHz	M	0.12	1.17
EC75F-270	27 @1.0 kHz	M	0.14	1.07
EC75F-330	33 @1.0 kHz	M	0.16	1.00
EC75F-390	39 @1.0 kHz	M	0.19	0.91
EC75F-470	47 @1.0 kHz	M	0.22	0.84
EC75F-560	56 @1.0 kHz	M	0.29	0.72
EC75F-680	68 @1.0 kHz	M	0.34	0.66
EC75F-820	82 @1.0 kHz	M	0.46	0.58
EC75F-101	100 @1.0 kHz	M	0.55	0.51
EC75F-121	120 @1.0 kHz	M	0.67	0.42
EC75F-151	150 @1.0 kHz	M	0.90	0.37
EC75F-181	180 @1.0 kHz	M	1.05	0.35
EC75F-221	220 @1.0 kHz	M	1.35	0.29
EC75F-271	270 @1.0 kHz	M	1.55	0.28
EC75F-331	330 @1.0 kHz	M	2.05	0.23
EC75F-391	390 @1.0 kHz	M	2.30	0.215
EC75F-471	470 @1.0 kHz	M	2.60	0.195

ECM Electronics Limited, Penmaen House, Ashington, West Sussex, RH20 3JR, UK
 Tel: +44(0)1903 892810: Fax: +44(0)1903 892738. Email: ecm@ecmelectronics.co.uk

Although we have attempted to accurately reflect the products we market. ECM reserve the right without prior notice to discontinue any product or make design changes we believe necessary.

ECM Surface Mount Power Inductors



ECM Part	L (mH)	Tol %	R_{DC} MAX (W)	I_{DC} I_N (A)
-----------------	---------------	--------------	-------------------------------	---

EC63C Series

EC63C-100	10 @1.0 kHz	M	0.15	1.10
EC63C-120	12 @1.0 kHz	M	0.20	1.00
EC63C-150	15 @1.0 kHz	M	0.23	0.90
EC63C-180	18 @1.0 kHz	M	0.27	0.80
EC63C-220	22 @1.0 kHz	M	0.34	0.74
EC63C-270	27 @1.0 kHz	M	0.38	0.66
EC63C-330	33 @1.0 kHz	M	0.45	0.59
EC63C-390	39 @1.0 kHz	M	0.49	0.54
EC63C-470	47 @1.0 kHz	M	0.69	0.50
EC63C-560	56 @1.0 kHz	M	0.78	0.46
EC63C-680	68 @1.0 kHz	M	1.07	0.42
EC63C-820	82 @1.0 kHz	M	1.21	0.38
EC63C-101	100 @1.0 kHz	M	1.39	0.34
EC63C-121	120 @1.0 kHz	M	1.90	0.31
EC63C-151	150 @1.0 kHz	M	2.18	0.28
EC63C-181	180 @1.0 kHz	M	2.77	0.26
EC63C-221	220 @1.0 kHz	M	3.12	0.23
EC63C-271	270 @1.0 kHz	M	4.38	0.22
EC63C-331	300 @1.0 kHz	M	4.94	0.19

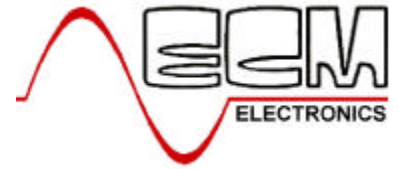
EC73C Series

EC73C-1R0	1.0 @1.0 kHz	M	0.019	3.12
EC73C-1R5	1.5 @1.0 kHz	M	0.023	2.85
EC73C-3R3	3.3 @1.0 kHz	M	0.035	2.26
EC73C-4R7	4.7 @1.0 kHz	M	0.043	1.96
EC73C-6R8	6.8 @1.0 kHz	M	0.055	1.76
EC73C-100	10 @1.0 kHz	M	0.08	1.34
EC73C-120	12 @1.0 kHz	M	0.09	1.23
EC73C-150	15 @1.0 kHz	M	0.12	1.09
EC73C-180	18 @1.0 kHz	M	0.13	0.99
EC73C-220	22 @1.0 kHz	M	0.15	0.90
EC73C-270	27 @1.0 kHz	M	0.21	0.81
EC73C-330	33 @1.0 kHz	M	0.25	0.72
EC73C-390	39 @1.0 kHz	M	0.31	0.67
EC73C-470	47 @1.0 kHz	M	0.35	0.60
EC73C-560	56 @1.0 kHz	M	0.43	0.55
EC73C-680	68 @1.0 kHz	M	0.52	0.50
EC73C-820	82 @1.0 kHz	M	0.60	0.46
EC73C-101	100 @1.0 kHz	M	0.79	0.41

ECM Electronics Limited, Penmaen House, Ashington, West Sussex, RH20 3JR, UK
 Tel: +44(0)1903 892810: Fax: +44(0)1903 892738. Email: ecm@ecmelectronics.co.uk

Although we have attempted to accurately reflect the products we market. ECM reserve the right without prior notice to discontinue any product or make design changes we believe necessary.

ECM Surface Mount Power Inductors



EC75C Series

EC75C-1R0	1.0 @1.0 kHz	M	0.023	2.88
EC75C-1R5	1.5 @1.0 kHz	M	0.027	2.61
EC75C-3R3	3.3 @1.0 kHz	M	0.035	2.28
EC75C-4R7	4.7 @1.0 kHz	M	0.041	2.08
EC75C-6R8	6.8 @1.0 kHz	M	0.047	1.94
EC75C-100	10 @1.0 kHz	M	0.050	1.68
EC75C-120	12 @1.0 kHz	M	0.070	1.54
EC75C-150	15 @1.0 kHz	M	0.080	1.39
EC75C-180	18 @1.0 kHz	M	0.090	1.26
EC75C-220	22 @1.0 kHz	M	0.11	1.13
EC75C-270	27 @1.0 kHz	M	0.15	1.02
EC75C-330	33 @1.0 kHz	M	0.17	0.84
EC75C-390	39 @1.0 kHz	M	0.18	0.80
EC75C-470	47 @1.0 kHz	M	0.20	0.76
EC75C-560	56 @1.0 kHz	M	0.28	0.64
EC75C-680	68 @1.0 kHz	M	0.32	0.60
EC75C-820	82 @1.0 kHz	M	0.35	0.57
EC75C-101	100 @1.0 kHz	M	0.40	0.50
EC75C-121	120 @1.0 kHz	M	0.44	0.47
EC75C-151	150 @1.0 kHz	M	0.73	0.40
EC75C-181	180 @1.0 kHz	M	0.78	0.39
EC75C-221	220 @1.0 kHz	M	0.94	0.33
EC75C-271	270 @1.0 kHz	M	1.25	0.31
EC75C-331	330 @1.0 kHz	M	1.40	0.28
EC75C-391	390 @1.0 kHz	M	1.52	0.27
EC75C-471	470 @1.0 kHz	M	1.70	0.25
EC75C-561	560 @1.0 kHz	M	2.39	0.22

TOLERANCE; M=20%

ECM Electronics Limited, Penmaen House, Ashington, West Sussex, RH20 3JR, UK
Tel: +44(0)1903 892810: Fax: +44(0)1903 892738. Email: ecm@ecmelectronics.co.uk

Although we have attempted to accurately reflect the products we market. ECM reserve the right without prior notice to discontinue any product or make design changes we believe necessary.